

# English for Nursing

A large, stylized blue number '2' is positioned on the right side of the cover, within a solid blue vertical band.

Vocational English  
Course Book

Maria Spada Symonds and Ros Wright  
Series editor David Bonamy

# Contents

		Function	Language	Vocabulary
Unit 1 Patient admissions	<b>Hospital jobs and personnel</b> p.4	Understanding hospital jobs	Present simple v present continuous	Hospital jobs and personnel
	<b>Hospital departments and facilities</b> p.6	Describing hospital departments and facilities	Prepositions of location <i>between, opposite, in front of, ...</i>	Hospital departments and facilities
	<b>Admissions</b> p.8	Explaining a process Assessing a patient	Requests <i>Could you fill in this form, please?</i>	Emergency room Pronouncing the alphabet
	<b>Checking in a patient</b> p.10	Interviewing a patient Giving directions	Describing location <i>The buzzer is next to the light.</i>	Patient details Hospital room facilities
Unit 2 Pain	<b>Locating and describing pain</b> p.12	Describing the location of pain	Comparative and superlative adjectives	Parts of the body Common medical problems
	<b>Pain assessment</b> p.14	Assessing pain	Adjective phrases <i>It's a tingling sensation.</i> Wh- question words	Expressions for the intensity of pain
	<b>Successful communication</b> p.16	Communication skills	Patient-friendly intonation	Secondary effects of pain
	<b>Pain relief</b> p.18	Giving advice	<i>Do and Don't</i>	Complementary and alternative medicine
Unit 3 Vital signs	<b>Statistics and vital signs</b> p.20	Describing statistics	Statistics	Weights and measurements Medical equipment
	<b>Describing readings</b> p.22	Describing a patient's vital signs Completing an observation chart	Abbreviations for vital signs <i>RR, BP, ...</i>	Environmental, social, psychological, physical descriptors
	<b>Taking vital signs</b> p.24	Giving instructions	<i>Will + infinitive for future</i>	Verbs for patient instructions <i>roll up, breathe, hold, ...</i>
	<b>Circulation and the heart</b> p.26	Explaining a process	Word stress	Diagram of the heart Smoking
Unit 4 Symptoms	<b>Symptoms and injuries</b> p.28	Describing symptoms and injuries	Past simple v past continuous Noun, verb and adjective forms of words	Common symptoms and injuries
	<b>Asking about symptoms and injuries</b> p.30	Asking questions	Open and closed questions	Patient record
	<b>Asthma emergency – giving instructions</b> p.32	Understanding the symptoms and causes of asthma Giving instructions to patients	The imperative <i>Take your time.</i> Staging words <i>First, then, ...</i>	Respiratory system
	<b>SOAP notes</b> p.34	Recording information	Common medical abbreviations <i>NKDA, R/O, ...</i>	Nursing terms

	Function	Language	Vocabulary
Unit 5 Food and nutrition	<b>Nutrition</b> p.36	Explaining different foods and food groups	Countable and uncountable nouns Food and nutrition Expressions of quantity
	<b>Nutritional status</b> p.38	Completing a nursing assessment form	Reading food journals Body Mass Index Descriptors for nutritional status <i>underweight, balanced, calorie intake, ...</i>
	<b>Food allergies and intolerances</b> p.40	Talking about the causes and symptoms of food allergies and intolerances	Stressed syllables Food allergies Diabetes
	<b>Advice on diet</b> p.42	Giving suggestions and advice	<i>should / shouldn't + infinitive</i> Tentative v strong expressions <i>How about + -ing</i> <i>It is advisable to + infinitive</i> Quantities <i>tablespoon, slice, packet, ...</i>
Unit 6 Personal care	<b>Patient hygiene</b> p.44	Expressing future intentions	<i>be going to + infinitive</i> for future Personal care
	<b>ADLs – activities of daily living</b> p.46	Assessing ADLs and completing a checklist	<i>-ing</i> form <i>He hates using the commode.</i> ADL equipment Offers, requests and refusals
	<b>Empathy</b> p.48	Making complaints Showing empathy	<i>-ed / -ing</i> adjectives <i>depressed / depressing, frustrated / frustrating, ...</i> Empathy, feelings, reassurance, privacy
	<b>Wound management</b> p.50	Completing a chart Reading a Case study	Asking questions using prompts Expressions to describe wounds and wound care
Unit 7 Elimination	<b>Assessing patient elimination</b> p.52	Using expressions	Past participles <i>catch / caught, be / been, ...</i> Formal and informal expressions / language
	<b>Describing bodily functions</b> p.54	Demonstrating Active Listening	Present perfect v past simple Assessment questions
	<b>Diarrhoea</b> p.56	Reading an article Answering comprehension questions	Word building Causes and treatment of diarrhoea
	<b>Presenting a patient case</b> p.58	Presenting information	Asking questions <i>How long have you suffered from ... ?</i> Nursing diagnosis
Unit 8 Patient discharge	<b>Evaluating levels of independence</b> p.60	Giving suggestions, recommendations and advice	Expressions for suggestions, recommendations, and advice Mobility aids <i>crutches, leg brace, non-slip mat, ...</i>
	<b>A patient discharge plan</b> p.62	Giving instructions and advice	Zero conditional <i>Who can I call if I have a problem?</i> First conditional <i>If I get tired, I'll have a rest.</i> Post discharge care
	<b>Explaining medication</b> p.64	Explaining medication	Imperatives <i>take, don't take, you need to, ...</i> Types of medication <i>capsules, tablets, nasal spray, ...</i>
	<b>Making appointments on the phone</b> p.66	Making appointments	Stress patterns used for clarification Appointment details / scheduling / rescheduling
Partner files p.68			
Audio script p.70			

# 1

## Patient admissions

- talk about hospital jobs and personnel
- talk about hospital departments and facilities
- handle admissions
- check in a patient



### Hospital jobs and personnel

**Vocabulary** 1 Look at the picture and match the job titles a–i with the hospital personnel 1–9.

- |   |  |  |
|---|--|--|
| a) <input type="checkbox"/> charge nurse / sister | d) <input type="checkbox"/> paramedic    | g) <input type="checkbox"/> surgeon      |
| b) <input type="checkbox"/> cleaner               | e) <input type="checkbox"/> porter       | h) <input type="checkbox"/> triage nurse |
| c) <input type="checkbox"/> consultant            | f) <input type="checkbox"/> receptionist | i) <input type="checkbox"/> scrub nurse  |

2 Read and choose the best description 1–9 for each job in 1.

- 1 I'm *responsible for* keeping the patient rooms clean.
- 2 I *give* emergency *treatment* to accident victims and then transport them to hospital by ambulance.
- 3 I *deal with* patient details and check their hospital records.
- 4 I am a senior doctor and I *specialise in* a certain area of medicine.
- 5 I'm *responsible for* making sure the most urgent cases are treated by the doctor as quickly as possible.
- 6 I *look after* patients during surgery and after their operations.
- 7 I *assist* the medical staff by transporting patients from one department to another.
- 8 I *am responsible for* running a ward. I *deal with* budgets and with employing staff.
- 9 I *carry out* operations on patients. I usually *specialise in* a particular type of surgery.



## Language

### Present simple v present continuous

We use the **present simple** to talk about routines and things that are permanent or happen all the time.

She **works** on the children's ward.

Auxiliaries **don't administer** medication.

We use the **present continuous** to talk about things that take place at the time of speaking and are not permanent.

I**m studying** for my nursing diploma.

We **aren't running** the clinic at the moment.


**Reading 3** Read the interview with a practice nurse and underline the correct verb forms.

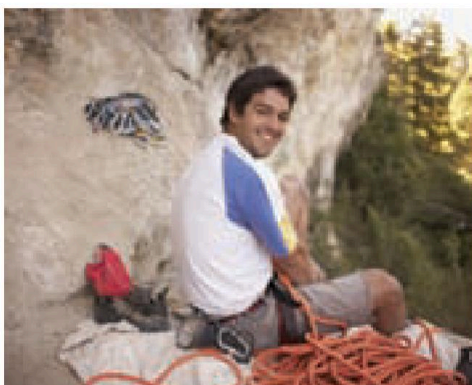


#### Reena Chaudry: *practice nurse*

AGE: 33 years old HOME: Hyderabad, India

'I <sup>1</sup>*work* / *'m working* as a practice nurse in a big doctor's surgery. This is my first job since graduation. I <sup>2</sup>*like* / *'m liking* the fact that every day is different. Practice nurses <sup>3</sup>*carry out* / *are carrying out* a lot of routine procedures; they <sup>4</sup>*change* / *are changing* dressings and <sup>5</sup>*treat* / *are treating* wounds, etc. I <sup>6</sup>*am* / *am being* also responsible for giving health checks and advising patients; I <sup>7</sup>*give* / *'m giving* them advice on healthy eating, for example and on health conditions such as asthma or diabetes. At the moment, with a colleague, we <sup>8</sup>*run* / *are running* a clinic for patients with diabetes. It's very interesting. and I <sup>9</sup>*learn* / *'m learning* a lot about how to deal with this condition. Like most nurses, I <sup>10</sup>*don't have* / *'m not having* a lot of free time, but I <sup>11</sup>*like going* / *'m liking going* to the cinema when I can. I also <sup>12</sup>*play* / *'m playing* the sitar in a classical music group.'

**Listening 4**  02 You're going to hear an interview with Carlos da Silva. Listen and answer this question.



#### Carlos da Silva: *agency nurse*

AGE: 35 years old HOME: Auckland, New Zealand

What area of nursing does he specialise in?

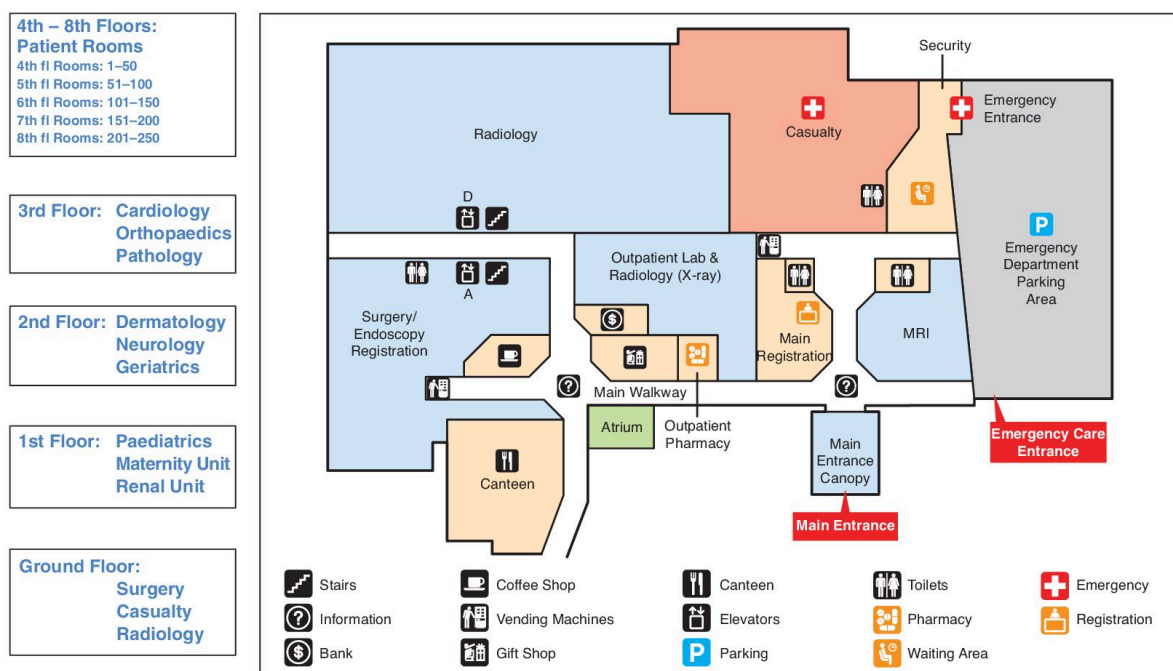
- a) renal care
- b) paediatrics
- c) emergency medicine

**5** Listen again. Copy and complete the sentences about Carlos.

- |                                      |   |
|--------------------------------------|---|
| 1 He specialises in ...              | 5 This week, he's ...                     |
| 2 At the moment, he's working in ... | 6 In his job, he likes / doesn't like ... |
| 3 He's looking after ...             | 7 In the future, he hopes to ...          |
| 4 Every day, he ...                  | 8 In his free time ...                    |

**Speaking 6** Work in pairs. Take turns to choose one of the sentences in 5 and ask your partner questions. Then introduce your partner to the class.

# Hospital departments and facilities



**Vocabulary 1** Use the words in the box to complete the definitions of these hospital departments.

babies children elderly emergency cases exercises heart kidney  
nervous system operations skin disorders test results X-rays

- Casualty** is the place where they treat \_\_\_\_\_.
- Surgery** is where surgeons carry out \_\_\_\_\_.
- Medical staff in the **Renal** Unit specialise in \_\_\_\_\_ diseases.
- The **Dermatology** Department is where they deal with \_\_\_\_\_.
- Specialists in **Geriatrics** treat problems related to the \_\_\_\_\_.
- Pathology** is where they analyse patient \_\_\_\_\_.
- Midwives deliver \_\_\_\_\_ in the **Maternity** Unit.
- Paediatrics** is where they treat \_\_\_\_\_.
- Patients with \_\_\_\_\_ disease visit **Cardiology**.
- The **Radiology** Department is where they take \_\_\_\_\_.
- Disorders of the \_\_\_\_\_ are treated in the **Neurology** Department.
- In the **Physiotherapy** Department, patients learn special \_\_\_\_\_ to help them recover.

**Pronunciation 2** 03 Put the words in bold from 1 into the correct box according to their stress pattern. Then listen and check your answers. Listen again and repeat.

••	•••	••••	•••••	••••••	•••••••
	Surgery			Dermatology	

**Speaking 3** Work in pairs. Take turns to ask and answer questions about the location of other places in the hospital. Use questions like these.

Excuse me; I'm looking for the ...

Sorry, where is / are the ...?

Do you know where the ... is / are?

**Vocabulary 4** A Senior Staff Nurse is explaining the layout of the hospital. Choose the correct prepositions in italics to complete the explanations 1–6.

- 1 The Dermatology Department is *between / at* the Neurology Department *at / and / in* Geriatrics.
- 2 Room 246 is *at / in / on* the eighth floor, just on *in front of / the left of* the lift.
- 3 You can find the Renal Unit *at / in / on* the first floor, *opposite / at* Paediatrics.
- 4 Your wife is *at / in / on* the Maternity Unit *at / in / on* the end of the corridor.
- 5 The Geriatrics Department is *next to / between* the Dermatology Department *at / in / on* the second floor.
- 6 I think that Mrs Nguyen is sitting over there, *between / in front of* the vending machine.

**5** Match the symbols a–i with the facilities 1–9.



- |                     |                |             |
|---------------------|----------------|-------------|
| 1 canteen           | 4 pharmacy     | 7 cashpoint |
| 2 registration desk | 5 waiting area | 8 toilets   |
| 3 vending machine   | 6 coffee shop  | 9 gift shop |

**Listening 6** 04 You are going to hear people giving directions to different hospital facilities. Listen and complete the instructions.

- 1  
 Visitor: Excuse me; I'm looking for the canteen. Can you help me?  
 Nurse: Yes of course. Go \_\_\_\_\_ and it's in \_\_\_\_\_ you, \_\_\_\_\_ the \_\_\_\_\_ of the corridor.

- 2  
 Visitor: Excuse me, do you know where the Maternity Unit is?  
 Nurse: It's on the \_\_\_\_\_ floor. Turn \_\_\_\_\_ here, go straight on, and when you get to the information desk, \_\_\_\_\_ right. At the end \_\_\_\_\_ the corridor, \_\_\_\_\_ again and take elevator A. The Maternity Unit is the first door on the left.

- 3  
 Visitor: Hello. Do you know if there's a shop in the building? We want to buy some magazines.  
 Nurse: Sure. Just \_\_\_\_\_ here and \_\_\_\_\_ down the corridor, there's a gift shop \_\_\_\_\_ the pharmacy. You can buy magazines there, I think.

**7** 05 Look at the hospital plan on page 6. Listen to the directions from this nurse and follow the plan with your finger. Then circle the correct answer.

- 1 The visitor is looking for the *coffee shop / main entrance / canteen*.
- 2 The visitor is on the *1st / 3rd / 4th* floor.

**8** Look at audio script 5 on page 70 and check your answers.



# Admissions

**Reading 1** Read the extract from a patient information leaflet from the Central Hospital in Phoenix, Arizona in the USA. What is the average waiting time ...

- 1 for a patient in ER in Central Hospital?
- 2 for a patient in ER in the State of Arizona?

## Central Hospital

### What to Expect

Highly skilled and experienced emergency medical staff are on hand 24 hours a day, seven days a week to provide essential emergency care at the Central Hospital Emergency Room (ER).

### The Triage Process

At the ER, we treat patients whose lives are in danger first. A special nurse 'sorts' the other patients and puts them in order according to how bad their symptoms are. This is called triage.

### When you arrive, this is usually what happens:

You check in at the <sup>1</sup> \_\_\_\_\_.

You give your name, address and <sup>2</sup> \_\_\_\_\_, etc.

You wait in a <sup>3</sup> \_\_\_\_\_.

A <sup>4</sup> \_\_\_\_\_ carries out some basic tests (pulse, heart rate, etc.)

He / She asks you some questions and makes an initial <sup>5</sup> \_\_\_\_\_ of your condition.

He / She decides the <sup>6</sup> \_\_\_\_\_ of care of all the patients in his / her charge.

The doctor visits you in the <sup>7</sup> \_\_\_\_\_ as soon as he / she is available.

### The Order of Care

We treat patients in order of priority:

Emergency (life-threatening) conditions, e.g. <sup>8</sup> \_\_\_\_\_.

Urgent problems, e.g. <sup>9</sup> \_\_\_\_\_.

Non-urgent problems, e.g. <sup>10</sup> \_\_\_\_\_.

### Waiting Times in ER

If your condition is not serious, you may have to wait before seeing a doctor in ER. However, our policy is to give quality care as soon as possible to all our patients. That is why at Central Hospital patients typically spend two hours less waiting in ER than the state average of 4.5 hours.

**2** Read the leaflet again. Complete the gaps 1–7 in the 'When you arrive' section with the words in the box.

assessment   cubicle (x2)   date of birth   priority   reception desk   triage nurse

**3** Look at these medical problems a–c. Which are the most serious? Match them to gaps 8–10 in the 'Order of care' section. Compare your answers with a partner.

- a) problems with breathing, a broken bone
- b) earache, sore throat
- c) heart attack, stopped breathing.





**Listening 4** 06 Listen to a triage nurse talking to four new patients. Decide which patient a–d above is speaking.

Patient 1 \_\_\_\_\_ Patient 3 \_\_\_\_\_  
Patient 2 \_\_\_\_\_ Patient 4 \_\_\_\_\_

**5** Listen again and complete the sentences with the words in the box.

baby    bleeding    eye    hurts    leg    worried

- 1 He has problems with his left \_\_\_\_\_.
- 2 Her head is \_\_\_\_\_ a lot.
- 3 My head \_\_\_\_\_.
- 4 I'm \_\_\_\_\_ about the \_\_\_\_\_.
- 5 My \_\_\_\_\_ hurts.

**6** Work in pairs. Put the patients in order of priority to see the doctor. Compare your ideas with another pair.

**7** Match the sentence halves to make six requests.

1 Could you take a seat in	a) lie back and try to relax?
2 Could you fill in _____	b) your head?
3 Could you _____	c) a few questions, please?
4 Could you tell me _____	d) this form, please?
5 Could you show me _____	e) the waiting room, please?
6 Could I just ask you _____	f) what happened?

**8** Listen again to the dialogue and choose one of the requests from 7 for each patient a–d. Compare your ideas with a partner.

**Pronunciation 9** 07 Can you pronounce the letters of the alphabet in English? Complete the groups with letters that have the same sound. Listen and check your answers.

B	C	D	—	—	—	—	—	—	—
A	—	J	—	Q	U	—	I	—	—

F	L	—	—	—	—	—	—
—	—	O	—	R	—	—	—

**10** Write down the names of four people you know. Work in pairs. Take turns to spell the names to each other.

# Checking in a patient

## Vocabulary



### Patient Details

Title: ..... First name(s): ..... Surname: .....  
 Gender: ☐ M ☐ F Marital status: .....  
 DOB: ..... Country of origin: .....  
 Occupation: .....  
 Address: *53 Coalport Ave, Tipton, Birmingham B32 9AH* .....  
 Tel: (home) ..... (work) *020 832 9400* (mobile) *0779 003 5491* .....  
 GP: *Dr Alice White* Tel: *020 612 1398* .....  
 Next of kin: ..... Relationship to patient: *husband* .....  
 Tel: (home) *020 831 9476* (mobile) .....  
 Smoking intake: *n/a* Allergies: .....  
 Reason for admission: *7 months pregnant, possible ...* .....

### 1 Find the words in the admissions form with these meanings.

- 1 family name \_\_\_\_\_
- 2 job \_\_\_\_\_
- 3 Mr / Mrs / Ms / Dr \_\_\_\_\_
- 4 family doctor \_\_\_\_\_
- 5 the name the patient wants the medical staff to use \_\_\_\_\_
- 6 closest relative \_\_\_\_\_
- 7 country where patient was born \_\_\_\_\_
- 8 male or female \_\_\_\_\_
- 9 married / single / divorced / widowed \_\_\_\_\_
- 10 why the patient is visiting hospital \_\_\_\_\_
- 11 date of birth \_\_\_\_\_
- 12 the amount of something you drink / eat, etc. regularly \_\_\_\_\_
- 13 a bad reaction to, for example, food or medicine \_\_\_\_\_

**Listening 2** 08 You are going to hear the nurse interview a patient from 4 on page 9. Listen. Which patient is she talking to? Listen again and fill in the admissions form for the patient.

### 3 Listen again and complete the nurse's questions.

- 1 Can you give me your full \_\_\_\_\_ please?
- 2 Can you \_\_\_\_\_ that, please?
- 3 What would you like us to \_\_\_\_\_ you?
- 4 What is your \_\_\_\_\_ of \_\_\_\_\_ ?
- 5 What is your \_\_\_\_\_ ?
- 6 Do you have any \_\_\_\_\_ ?

**4** Write questions for these answers. Look at audio script 8 on page 70 to check your answers.

- 1 Where \_\_\_\_\_ ?  
I'm originally from Catagne, in Sicily.
- 2 What's \_\_\_\_\_ ?  
I'm married.
- 3 Who \_\_\_\_\_ ?  
That's Daniel, my husband.

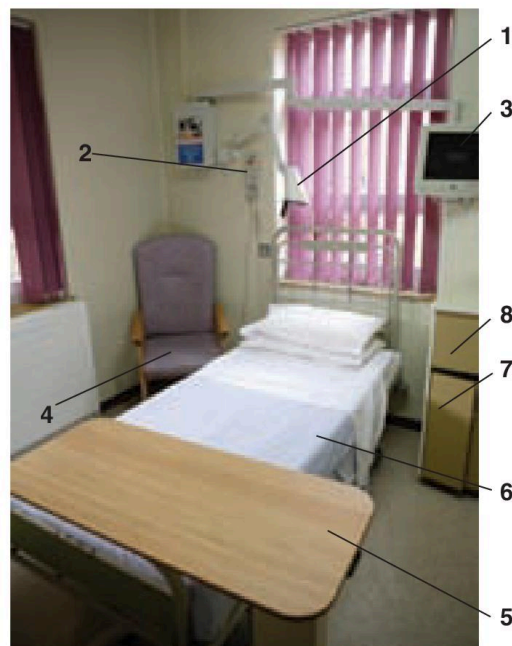
**Vocabulary 5** The doctor decides that Rosanna is going to stay in hospital for observation. Look at her room. Label the picture with the words in the box.

bed	buzzer	chair	drawer
light	locker	table	TV

**Listening 6**  09 Listen and write the names of the objects from 5 that you hear.

**7** Listen again. Then look at the photo and complete the information about the facilities in the room and hospital.

- 1 The buzzer is next to the \_\_\_\_\_ above the \_\_\_\_\_ .
- 2 The \_\_\_\_\_ is next to the window, on the right.
- 3 The \_\_\_\_\_ is above the locker.
- 4 The gift shop is between the \_\_\_\_\_ and the \_\_\_\_\_ .
- 5 The gift shop is on the \_\_\_\_\_ floor.
- 6 The public phone is down the \_\_\_\_\_ , on the left after the \_\_\_\_\_ .



**Speaking 8** Work in pairs. Take turns playing the role of a patient and of the nurse who admits the patient to hospital. Invent an identity for your patient, including the details below. Copy a blank patient admissions form like the one on page 10. Interview your patient and complete their details in the form. Then show the patient to their bed and explain the facilities in the room.

- |                           |                        |
|---------------------------|------------------------|
| • full name and address   | • marital status       |
| • family and next of kin  | • smoking intake       |
| • date and place of birth | • allergies            |
| • occupation              | • reason for admission |